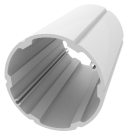


Product Datasheet

Playset PZA R1266

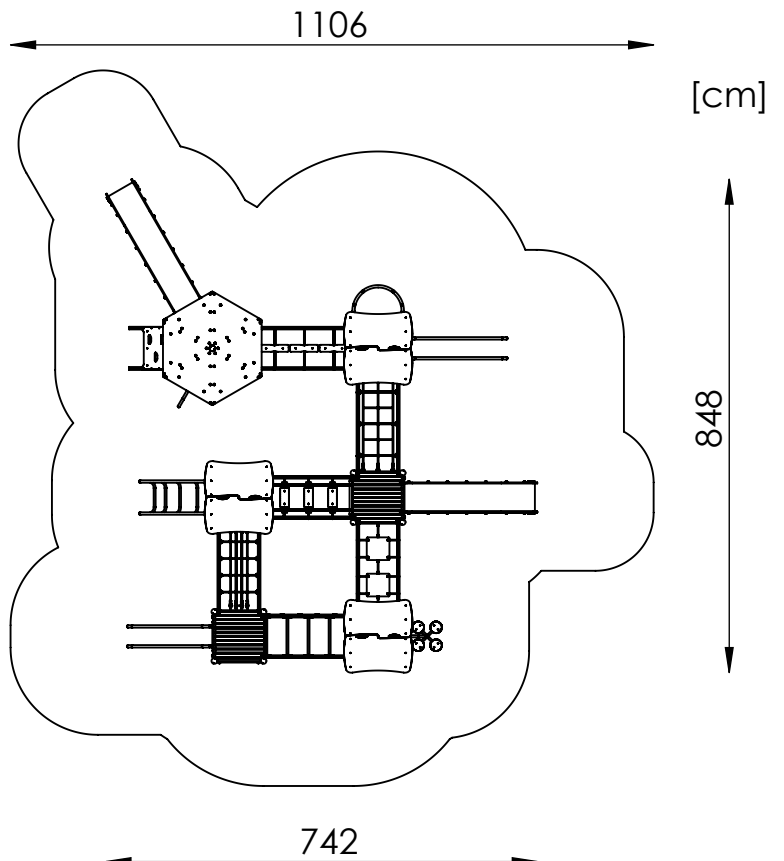
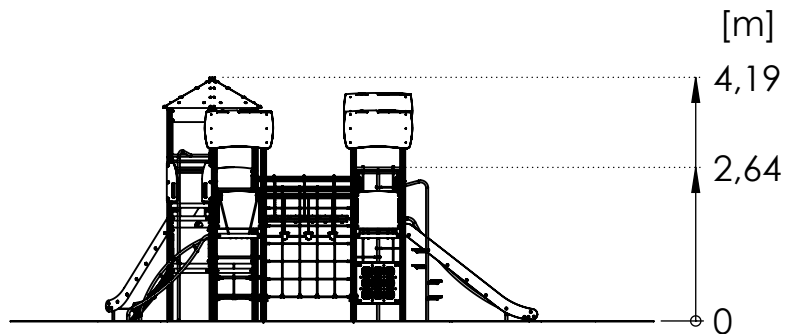


Aluminium round
profile
Ø89 mm



The set contains:

1. Tower with hexagonal platform with roof - 1 pcs
2. Tower with square platform with roof - 3 pcs
3. Tower with square platform without roof - 2 pcs
4. Slide h=180 cm - 1 pcs
5. Slide h=150 cm - 1 pcs
6. Slide Pipe h=180 cm - 1 pcs
7. Slide Pipe h=150 cm - 1 pcs
8. Arch Pipe Entry- 1 pcs
9. Oblique Climbing Wall - 1 pcs
10. Climbing Wall - 1 pcs
11. Rope Climbing Wall - 1 pcs
12. Rope Bridge - 3 pcs
13. Balance Bridge - 1 pcs
14. Chains Bridge - 1 pcs
15. Rope Tunnel - 1 pcs
16. Ladder - 2 pcs
17. Fireman's Pipe with Steps - 1 pcs
18. Fireman's Pipe h=200 cm - 1 pcs
19. Paraller Bars - 1 pcs
20. Rope Entrance - 1 pcs
21. Rubber Seat - 2 pcs
22. Educational Panel - 1 pcs



Age: 5+

Safety zone: 1230 cm x 1106 cm

Safety zone area: 96,8 m²

Free fall height: 264 cm

Spare parts availability: YES

Product compliant with PN-EN 1176-1, PE-EN 1176-3: YES

Mounting:

The set is mounted in the ground.
Foundations made of C20/25 concrete.

In sets containing a slide, pay attention to the location in relation to the directions of the world because the sun heats the slide. The slide should not be mounted to the south.

Renders are for reference only, actual appearance may differ from the one show on the render.

Acceptable shock absorbing surfaces and their minimum thickness

Material ^a	Description [mm]	Minimum depth ^b [cm]	Maximum free heights of fall [cm]
Turf/topsoil		-	≤ 100 ^d
Bark	20 to 80 particle size	20	≤ 200
		30	≤ 300
Woodchip	5 to 30 particle size	20	≤ 200
		30	≤ 300
Sand or gravel ^c	0,25 to 8 grain size	20	≤ 200
		30	≤ 300
Other materials	As tested according to EN 1177		Critical fall height as tested

^a For further information on specific material properly prepared for use in children's playgrounds

^b For loose particulate material, add 100 mm to the minimum depth to compensate for displacement(see 4.2.8.5.1).

^c Sand and gravel shall be well rounded and washed to eliminate most of the silt or clay particles. Washed sand and gravel is considered to be from alluvial (natural eroded) deposits and free from most silt or clay particles. For gravel this may commonly be described as 'pea shingle'. Uniformity coefficient $D_{60}/D_{10} < 3,0$. Grain size can be identified by use of a sieve test, as in EN 933-1(see Annex G)

^d See NOTE 2 in 4.2.8.5.2